

# A DAY IN THE LIFE OF

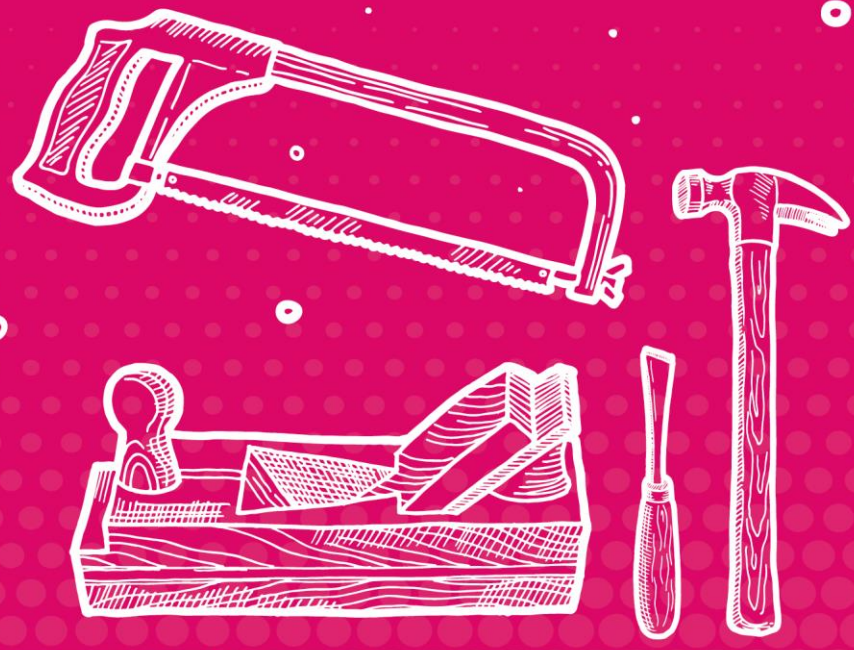
An On Campus Worker:  
William Millar, Building  
Maintenance  
Supervisor

My role requires me to be on campus to deliver the outputs I have responsibility for. My team and I carry out repairs and planned maintenance around the University buildings.

**8:30**

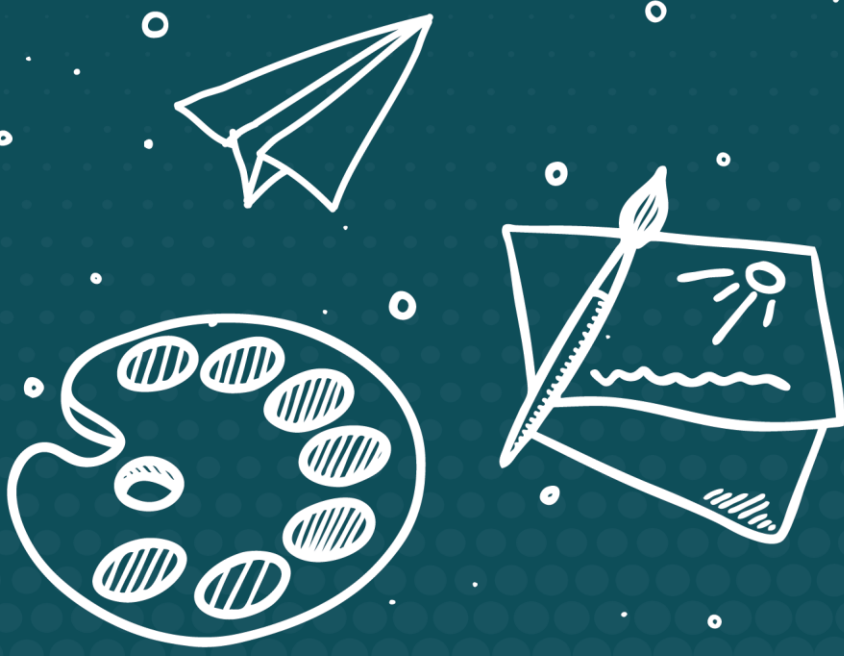
Carry out new works such as stud partitions, replacement window frames, doors and wood blocks or any other work normally associated with a carpenter/joiner.

## PHYSICAL WORK



## MAINTENANCE WORK

## CRAFT PRACTICES



## MULTISKILLED TASKS

**10:30**

We perform a wide range of craft practices in line with the concept of flexible and multiskilled working.

**13:45**

Ensure that all work and operation of woodworking machinery is carried out in a safe manner in accordance with current safety legislation and University safety guidelines.

## SAFETY



## QUALITY ASSURANCE

## TOOLKIT



## DAILY DUTIES

**2:30**

Maintain the cleanliness of the workshop and other places of work together with care and security of tools and equipment.