

A DAY IN THE LIFE OF

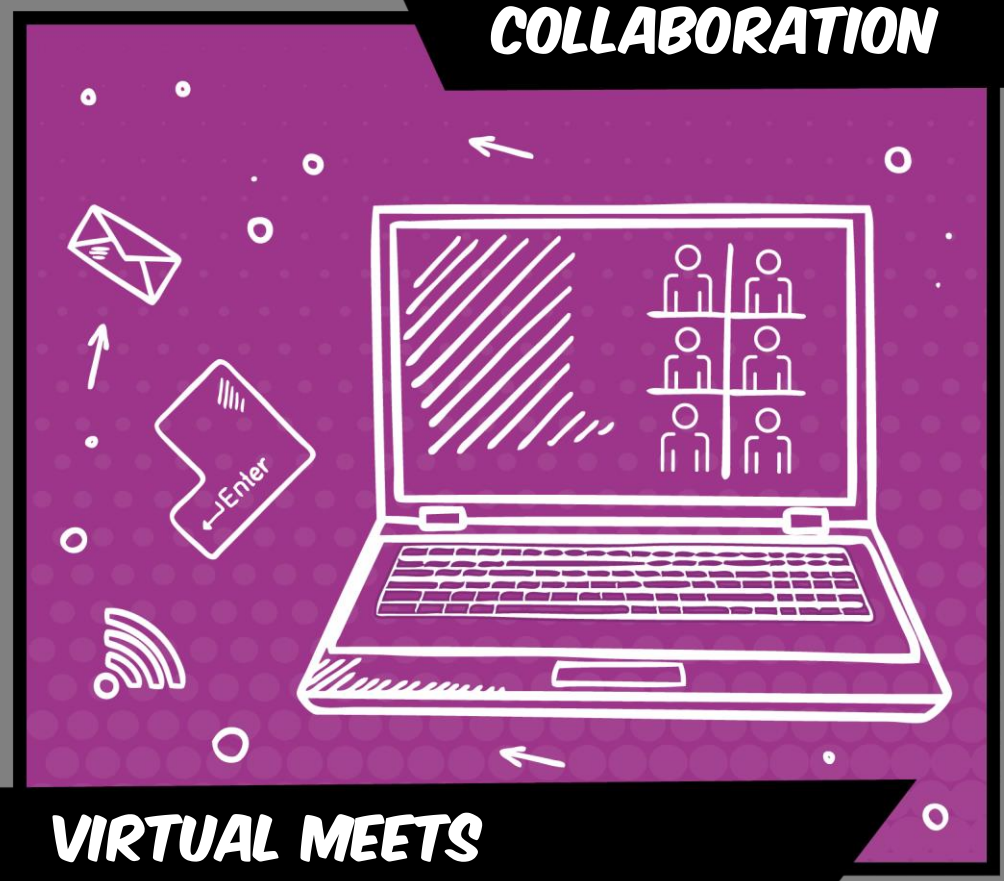
A Hybrid Worker:
Jiteen Ahmed, Head
of Technical Services

As a Technical Manager I manage a team who work predominantly in a lab environment. However, the use of technology means I can manage my time on and off campus.

8:30

when I need to liaise with colleagues who use the labs such as technical staff, researchers, Estates teams, HSU, Procurement and academics I can do so collaboratively virtually via Teams.

COLLABORATION



RISK ASSESSMENTS



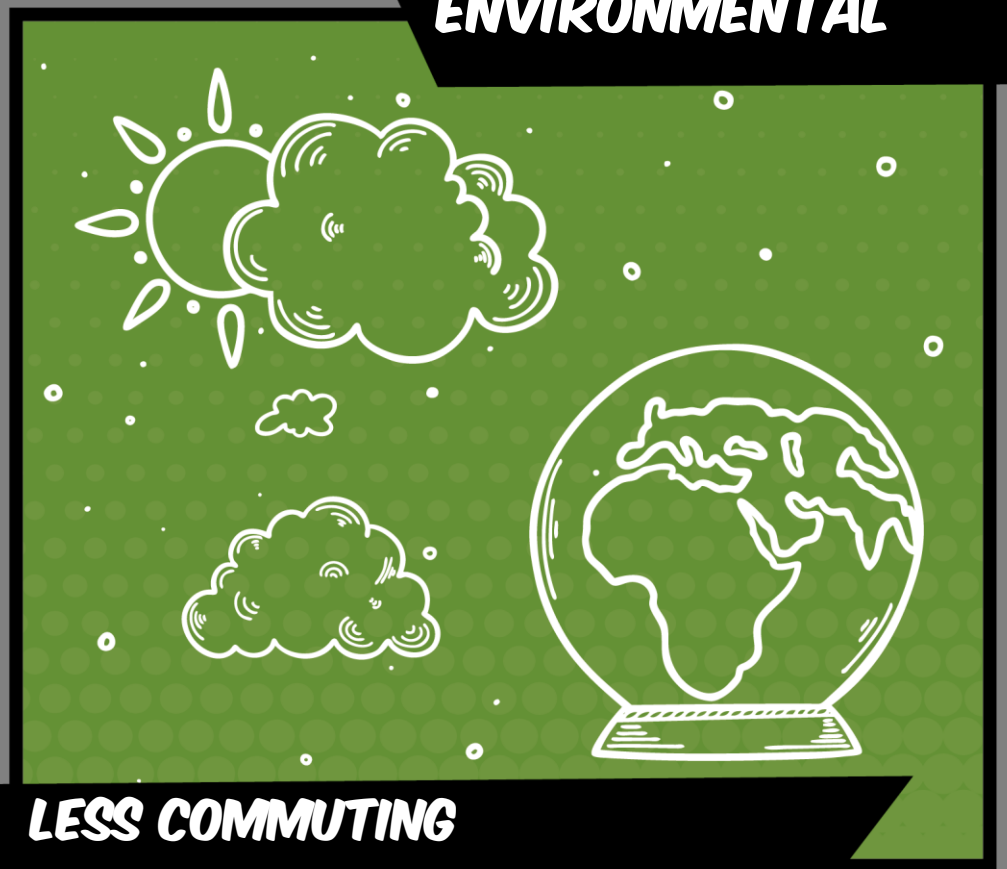
10:30

When I need to conduct risk assessments and check lab equipment for safety reasons, I come onto campus to do that.

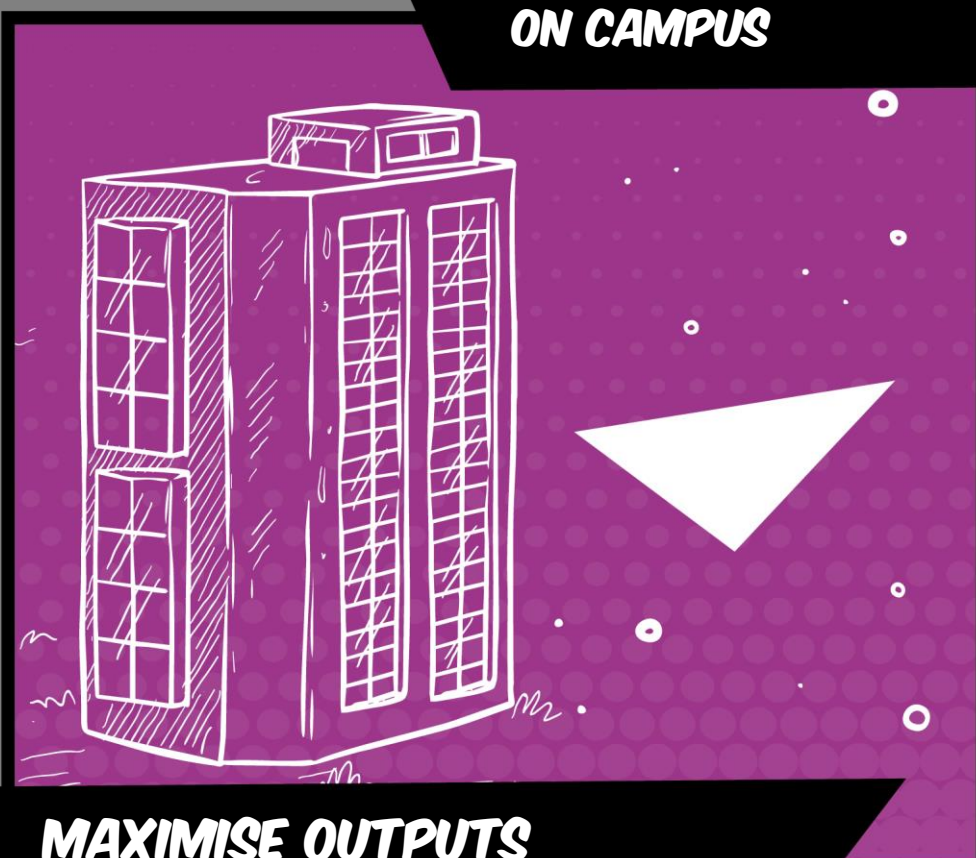
11:45

My role involves liaising with different external clients such as Midlands Innovations or fellow HE colleagues. Being able to collaborate with these clients via Teams on my laptop, tablet and phone enables me to save time, money and energy from commuting up and down the country.

ENVIRONMENTAL



ON CAMPUS



14:30

Dynamic working has allowed me to use my time wisely and maximise my outputs for the University - it gives me the flexibility to work where it makes most sense for me, the University and our beneficiaries.