

GUIDE

Step 1: Find your teaching room in '**SECTION 1**'.

Step 2: Select the relevant lift next to your teaching room within '**SECTION 2**'.

Step 2a: If your teaching room is Red, follow the red line to your designated lift.

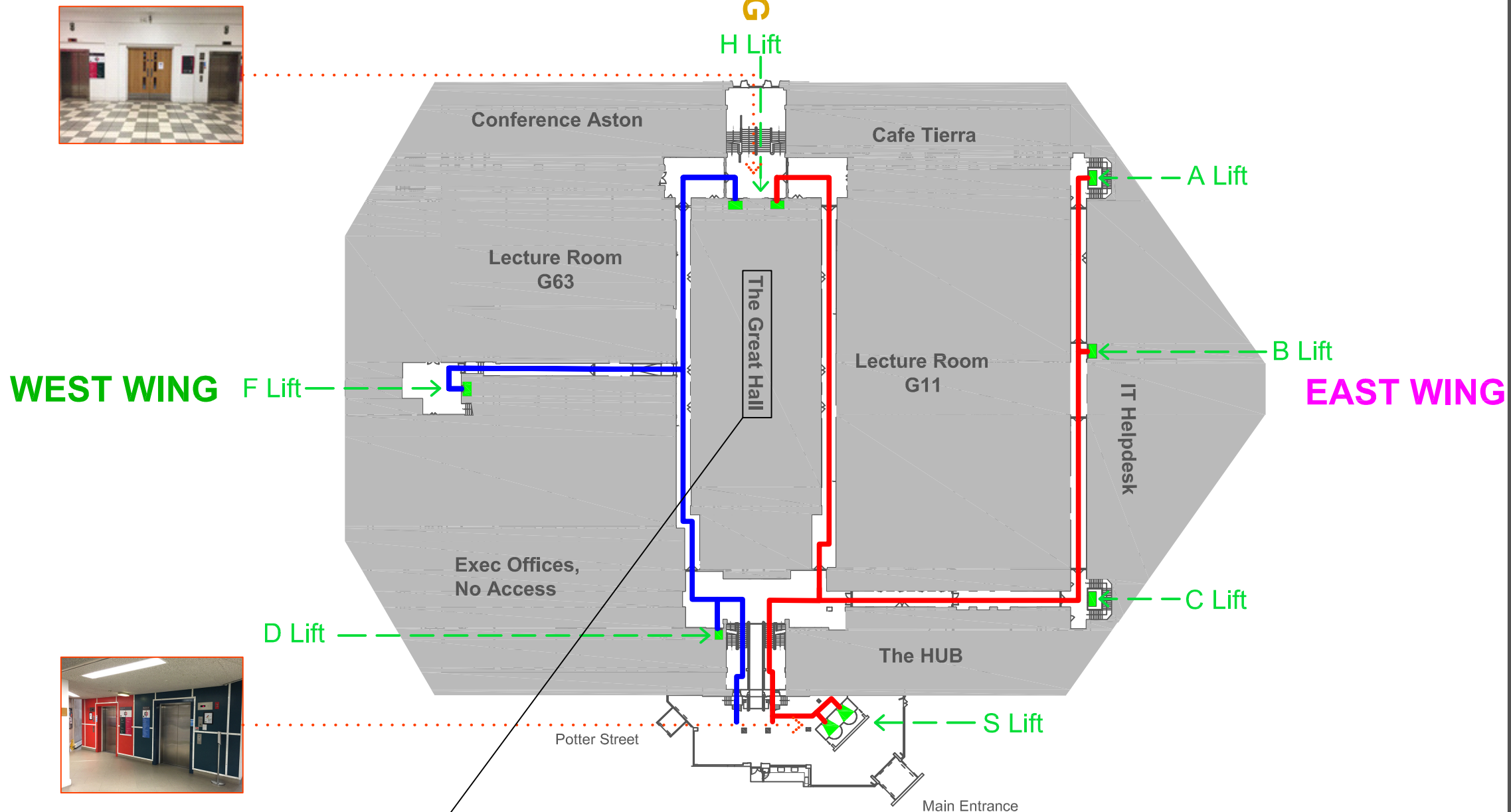
Step 2b: If your teaching room is Blue, follow the blue line to your designated lift.

SECTION 1

Main Building
Teaching Rooms & Lecture Theatres

First Floor	Lift
Room 108	A or B
Great Hall Balcony	H
Room 146	H
Room 155	H
Room 161	F or H
Second Floor	Lift
Room 204-206	B or C
Room 220	D
Room 227-231	D
Room 241	D
Room 245	D
Room 246A-B	D
Room 256A-G	D
Room 257	D
Room 259	D
Room 261	D
Third Floor	Lift
Room 371-375	A
Fourth Floor	Lift
Room 404A-B	B or C
Room 404C-D	A or B
Room 486	A
Fifth Floor	Lift
Room 502	A
Room 504	A or B
Room 512	C or B
Room 517-518	C or S
Room 549-559	F or H
Room 564-574	A or H
Sixth Floor	Lift
Room 603	A or B
Room 644	H
Sumpner	A or H
Room 653 Mike Wright	A or B
Seventh Floor	Lift
Room 708A-B	A, B or C
Room 708C	A, B or C
Room 750-759	D

SECTION 2



NOTE:
Great Hall accessible on blue and red routes

MB708 A-C NOT accessible from 'D' lift, use A-C lift

Please give priority to disabled users of the building.



Or...

Why not take the stairs?

Lifts use energy and generate CO₂ emissions

