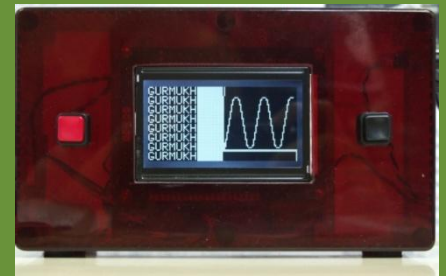
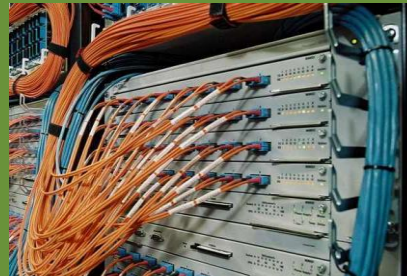


4 Year MEng Programmes - with integrated 1 year placement

Dr Kate Sugden, Electrical and Electronic Engineering



Why consider a new MEng format?

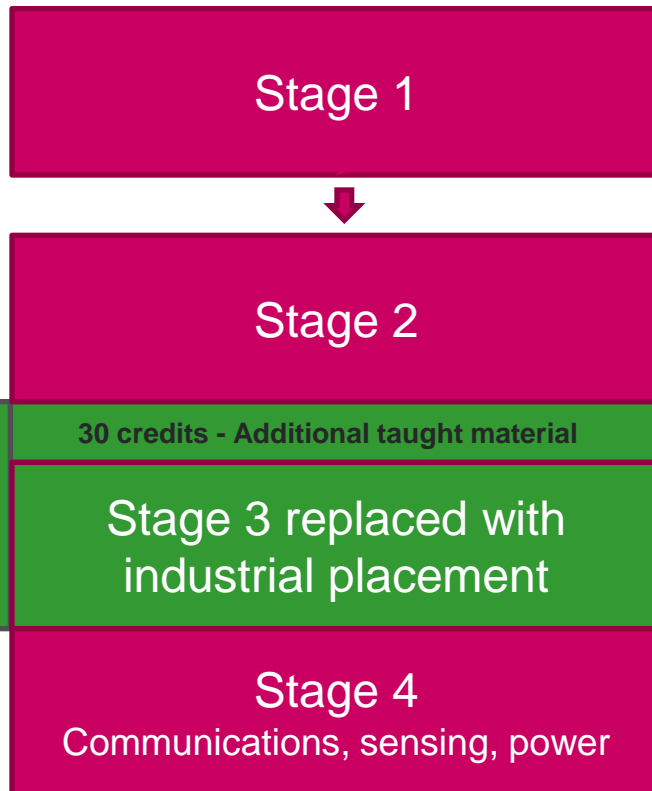
Drivers

- ▶ Increasingly students and employers are looking to an MEng or MSc as a differentiator
- ▶ A year in industry is beneficial
 - students come back very motivated
 - students can place what they are studying in context
- ▶ BUT increase in fees puts a pressure on course length due to significant cost and time implications

Considerations

- ▶ Ideally there needs to be flexibility to transfer between MEng and Beng
- ▶ Need to fit in with conventional placement recruitment
- ▶ We believe MEng is important to deliver the engineers that industry needs

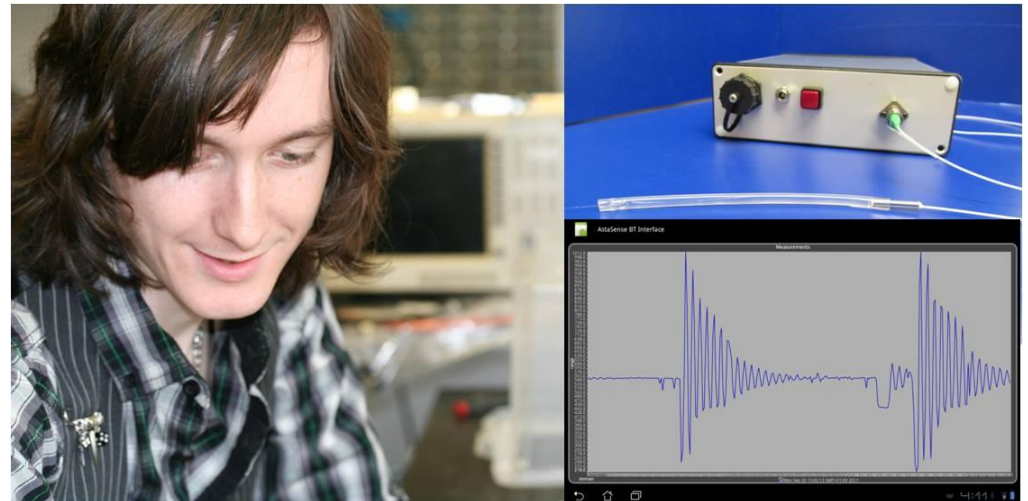
New MEng structure



- ▶ Stages 1 and 2 are the same as for the BEng course allowing students to transfer
 - important for widening participation
- ▶ 12 month placement in year 3
 - additional academic work
 - optional year abroad instead of industrial work
- ▶ MEng places are confirmed at the end of the second year
 - requires an overall average in Years 1&2 of >60%
- ▶ Introduction of assessed modules after 2nd year exams to ease transition
 - digital transmission, C / Java
- ▶ Placement is academically assessed
 - literature review to support work being done
 - market review
 - sustainable Engineering and Supply Chain Mgmt
- ▶ Masters level modules taken in the final year

Current placements

- ▶ Students are currently in placements at:
 - ▶ TomTom (Netherlands)
 - ▶ Astatense (SME)
 - ▶ DSTL
 - ▶ Technical University of Munich
 - ▶ GE
 - ▶ Accenture
 - ▶ JPM Parry & Associates



Key features

- ▶ Designed to stretch the top students
- ▶ Transfer from BEng up until the end of the second year
- ▶ Allows students to benefit from industrial experience
 - delivering additional modules after the 2nd year exams
 - academically assessing the placement
 - paid
- ▶ 3.5 years fees instead of 4 years
- ▶ MEng qualification (European Masters level)

Questions?

Contact us:

+44 (0)121 204 3400
engineering@aston.ac.uk

